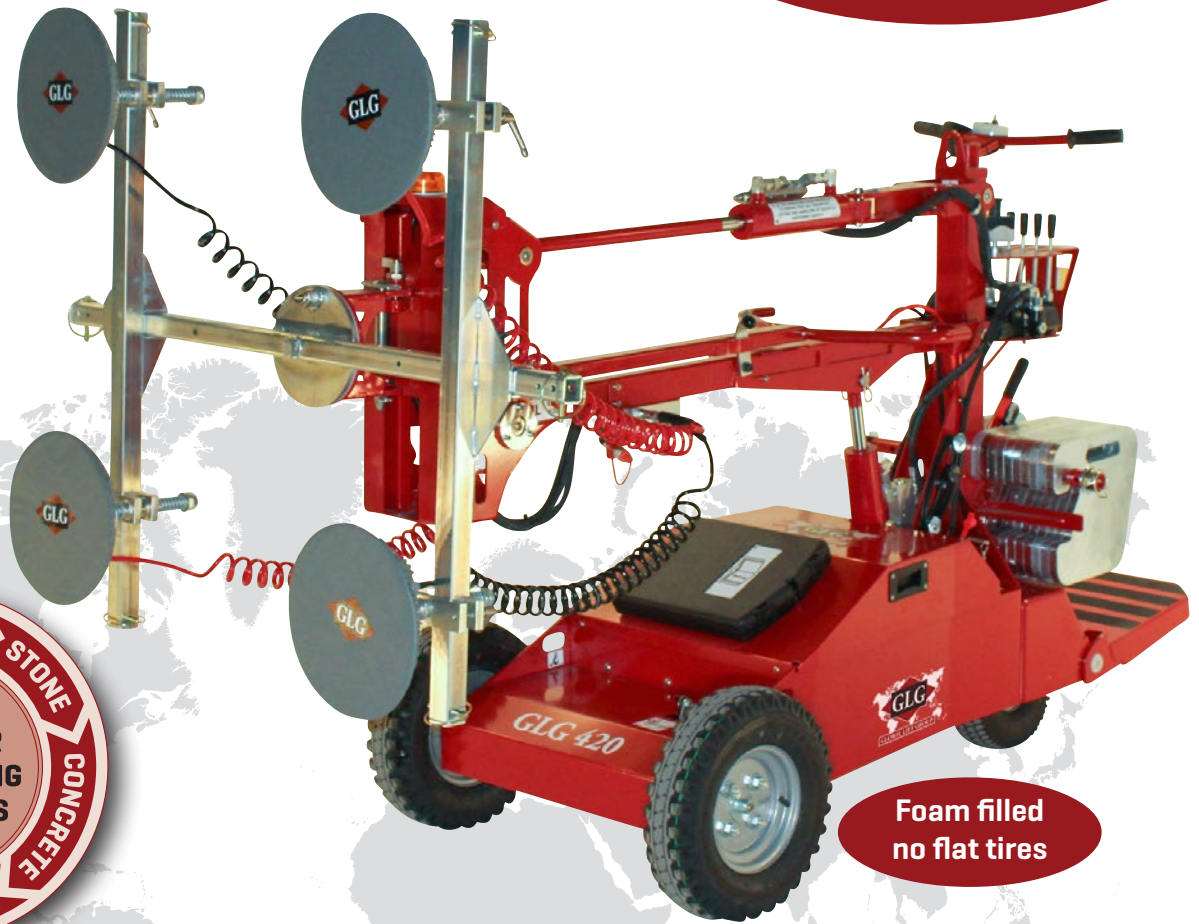


CHASSIS

B

GLG 420 SP

**Very powerful
self-propelled all adaptable
glass handler lifting up to
420 kg/925 lbs.**



**Foam filled
no flat tires**

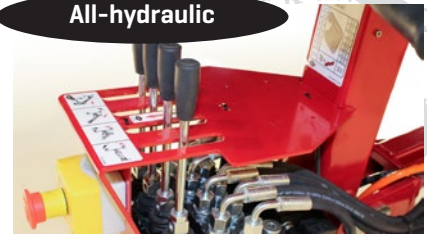
- Intelligent all adaptable glass handler for millimeter precise maneuverability of flat materials
- No Outriggers - less floor space required
- Drives through narrow passages down to 83,3 cm/33"

400% overcapacity



The most secure vacuum system with two separate 200% systems.

All-hydraulic



All moving parts are controlled by the powerful and extremely precise hydraulic system.

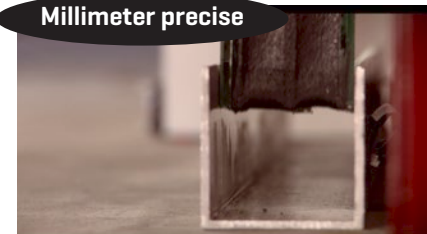
**SERVICE
24 HOUR
DELIVERY OF SPARE PARTS**

Powerful battery pack



Two 159AH 12V batteries in series provide a powerful battery pack and ensure optimal autonomy. Recharges over night.

Millimeter precise

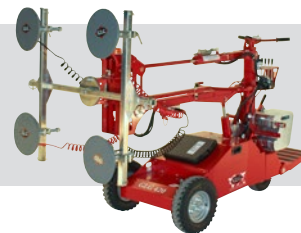


The GLG all adaptable handlers are the most precise lifters in the world when combined with the extremely heavy loads.



We lift it up where it belongs!

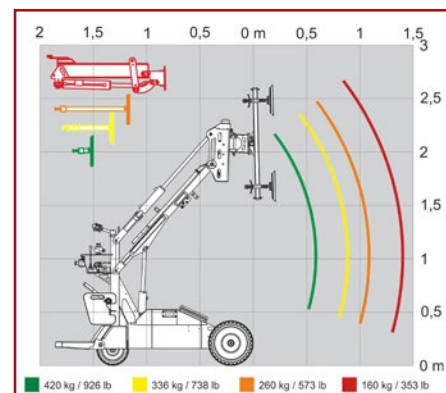
www.glgsales.com



Technical specifications

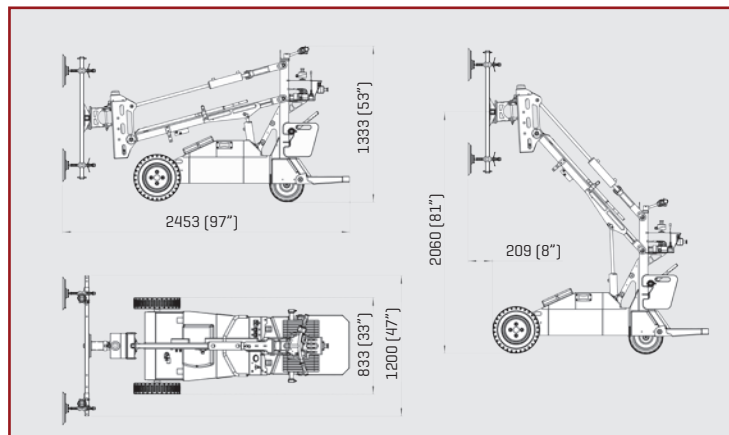
Description	EU	US	Description	EU	US
Loading capacity w. 22 counterw.	420 kg	925 lb	Width twin wheels	1.083 mm	43"
Own weight w. counterw.	697 kg	1537 lb	Width boom	1.200 mm	47"
Own weight without counterw.	466 kg	1027 lb	Length	2.000 mm	79"
Axle load rear	243,00 kg	536 lb	Height	1.333 mm	52"
Axle load front	220,00 kg	485 lb	Lifting height	2.060 mm	81"
Pressure rear wheels	4,31 kg/cm ²	61 lb/in ²	Sideshift	70 mm	3"
Pressure front wheels	3,49 kg/cm ²	50 lb/in ²	Vertical shift	150 mm	6"
Pressure front wheels twin mount	1,75 kg/cm ²	25 lb/in ²	Suction discs	Ø320 mm - 4 pcs.	
Max lifting height	2.063 mm	81"	Charging current	115 V/230 V	
Width	833 mm	33"	Battery [std.]	2 x 12 V / 159AH	
			Loading time 30% to 100%	App. 9 hours	

Lifting diagramme

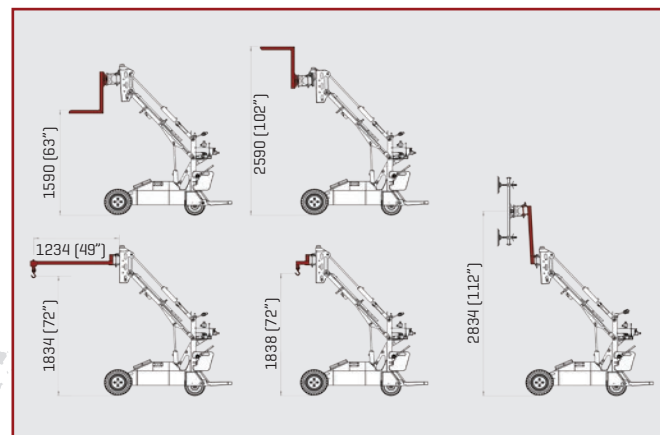


Lifting data with the different extension arms and with the front lift arm.

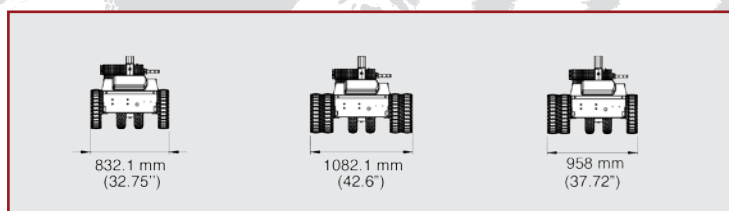
Measurements



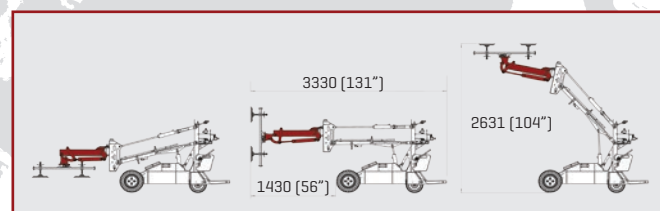
Accessories



Front wheel set-up's



Horizontal lifting arm



Specifications Our machines comply with the requirements of Machinery Directive 2006/42/EC, and are ASME B30.5, 5-1.1, 5-1.10 Compliant, ASME B30.20 Compliant, SAE-J1063 Compliant, and SAE-J765 Compliant.

Other standards met include:

DS/EN ISO 12100:2011 Safety of machinery – General principles for design
DS/EN ISO 4413:2010 Hydraulic fluid power
DS/EN 13155 + A2:2009 Cranes – Safety – Non-fixed load lifting attachment.

Much more information at www.glgsales.com

GLG Canada Ltd (North America)
21332 Wilson Street, NOL 1E0
Delaware, Ontario, Canada
Phone: 1-855-779-3371

European Head Office
Soendergaarden 28
9640 Farsoe, Denmark
Phone: +45 75 72 72 15

www.glgsales.com



GLOBAL LIFT GROUP